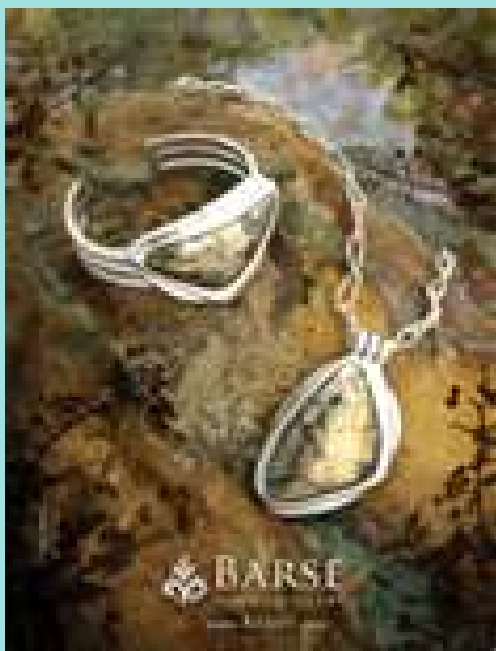
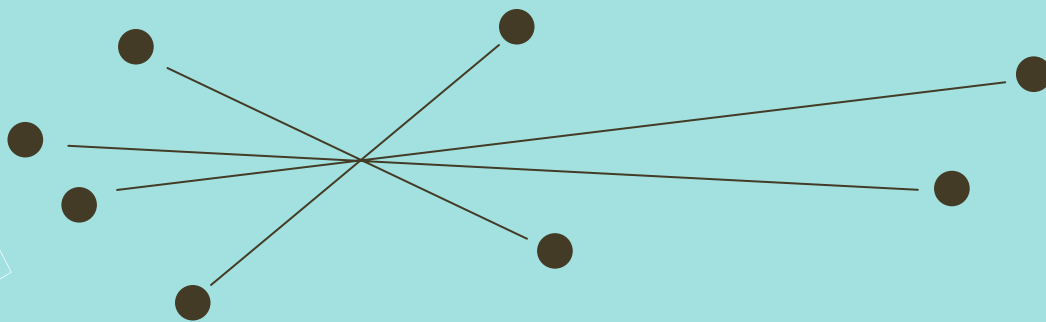


BARSE & CO.



The Barse brand can be found in retail settings from major department stores and electronic retailers to our own barse.com and retail storefront in Southlake, TX. Our talented in-house design team continually creates a turnover of fresh collections that reflect a constantly changing fashion arena.

Contact person: Julee Emmons

Phone: 214-631-0925

Location: Dallas, TX

Internships available to merchandising majors during the fall, spring or summer semesters.

